

## Release Notes for IP Setup tool Version 1.4.1.9

### CONTENTS

1. New Features .....	2
1.1. Support for Fourth Generation Cameras .....	2
2. Bug Fixes .....	2
2.1. Reboot and OK button functionality fixed .....	2
2.2. Copy function fixed.....	2
3. Outstanding Issues .....	2
4. How to obtain the software .....	2
5. How to install the software .....	2
6. How to use software .....	8
7. Camera Compatibility Matrix .....	9



Network Video

## Monitoring

### 1. New Features

#### 1.1. Support for Fourth Generation Cameras

Support has been added for the SNC-DS10, SNC-DM110, SNC-DS60, SNC-DM160, SNC-CS20, SNC-CM120

### 2. Bug Fixes

#### 2.1. Reboot and OK button functionality fixed

Bug fix for [Reboot] button and [OK] button are not active when executing factory default with setting [Administrator name] and [Administrator password].

#### 2.2. Copy function fixed

Bug fix for [Administrator name] copy failure with [Ctrl]+[c].

### 3. Outstanding Issues

None known.

### 4. How to obtain the software

Software is available on [www.sonybiz.net/nvm](http://www.sonybiz.net/nvm)

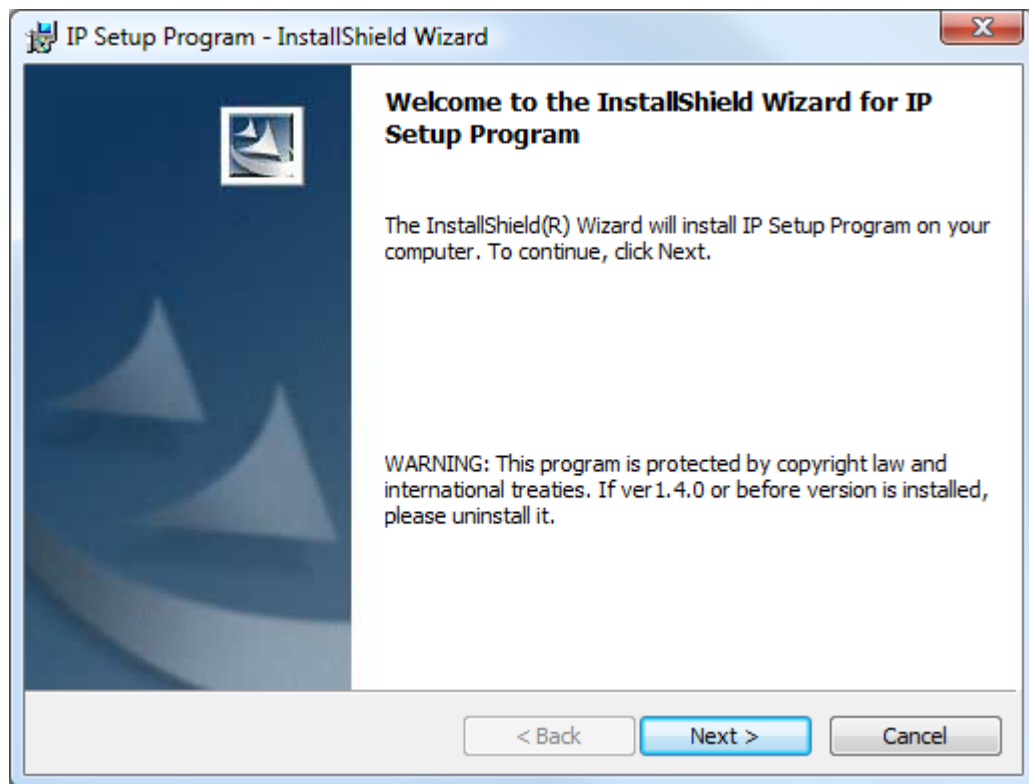
### 5. How to install the software

Extract files from the 'zip' file and double click on the 'IPSetupProgram\_Setup' icon.

# SONY

Network Video

Monitoring



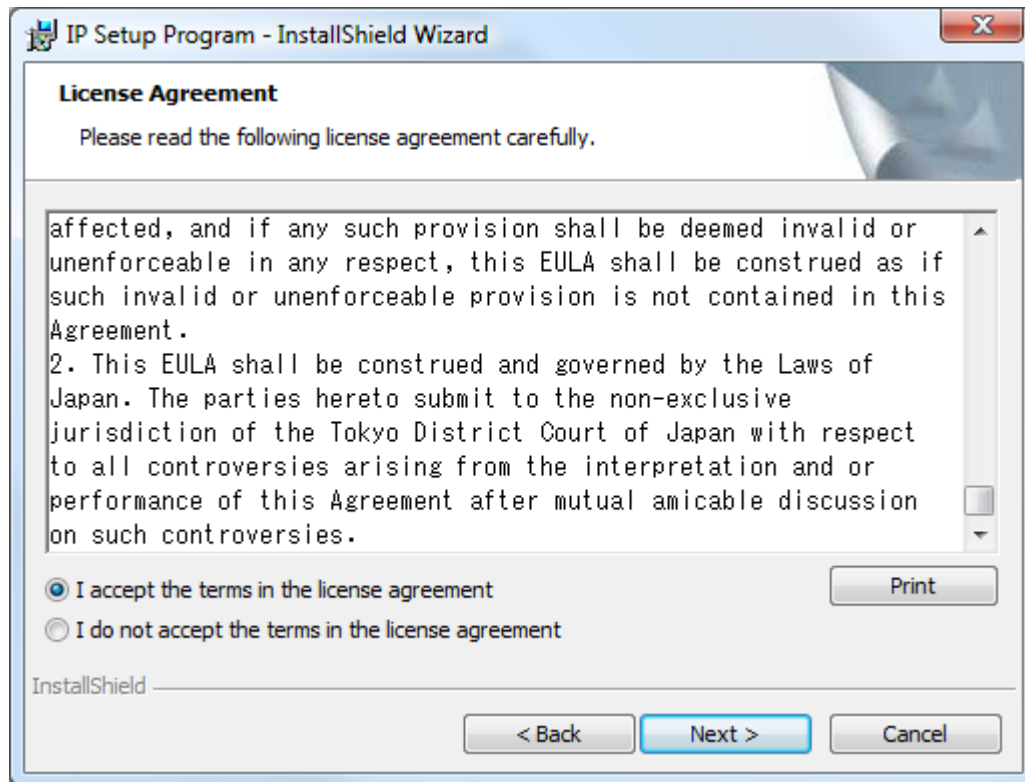
Please read the above messages, then click on the next button.

[www.sonybiz.net](http://www.sonybiz.net)

# SONY

## Network Video

### Monitoring



If you agree with the terms of the licence agreement, click on the Next button.

# SONY

Network Video

Monitoring

IP Setup Program - InstallShield Wizard

**Customer Information**

Please enter your information.

User Name:  
Sony PSE

Organization:  
Sony United Kingdom Limited

Install this application for:

☒ Anyone who uses this computer (all users)

☐ Only for me (admin)

InstallShield

< Back Next > Cancel

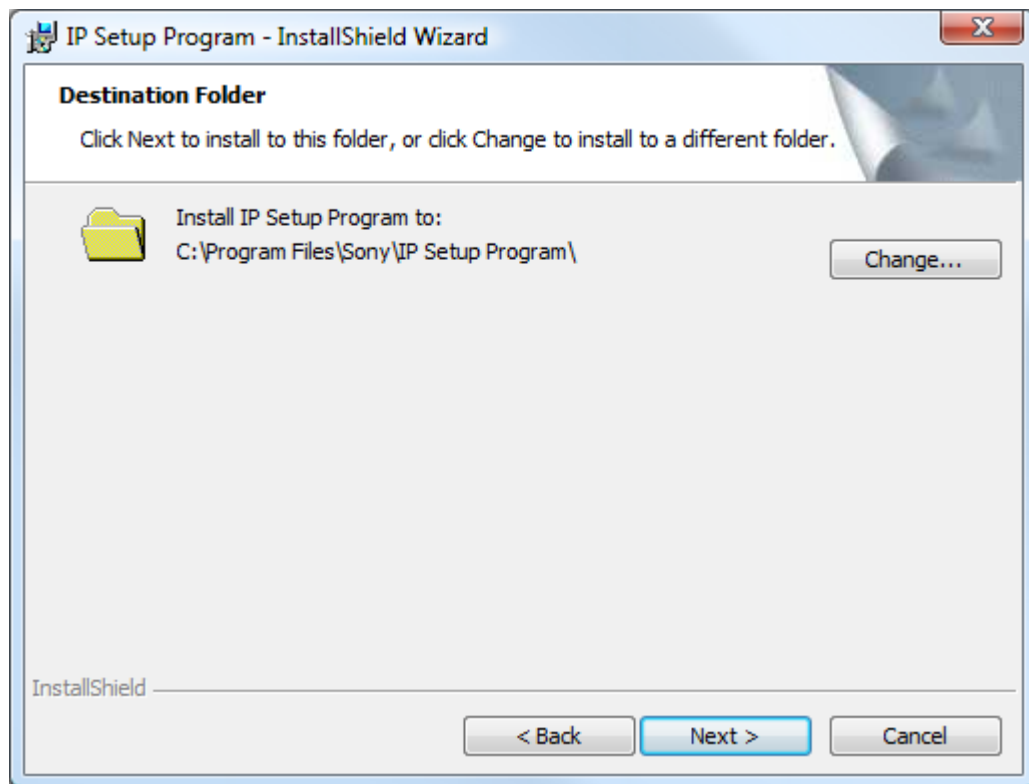
Enter in your name and organisation.

[www.sonybiz.net](http://www.sonybiz.net)

# SONY

Network Video

Monitoring



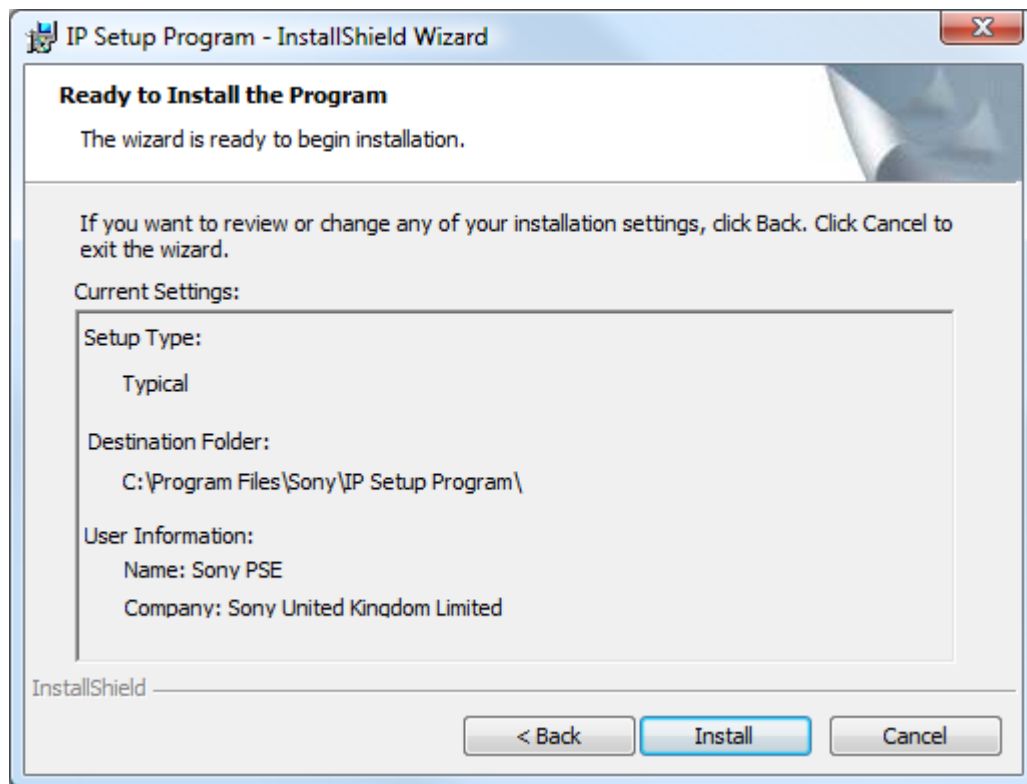
Select a location to install the software.

[www.sonybiz.net](http://www.sonybiz.net)

# SONY

Network Video

## Monitoring

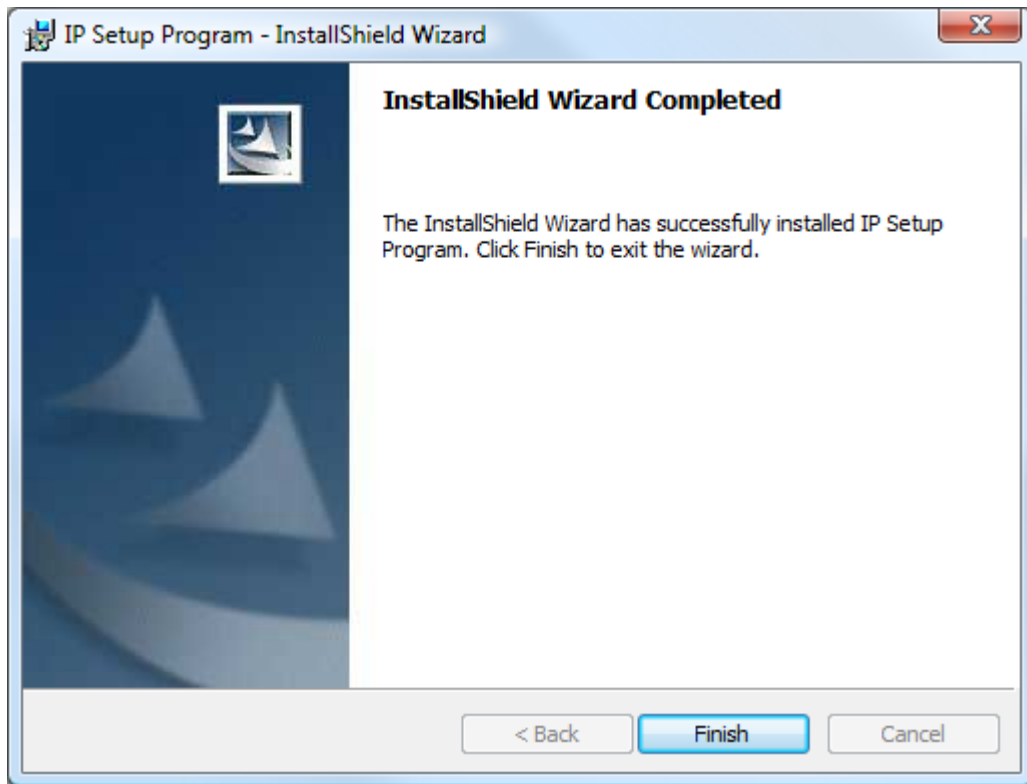


Click on the install button to start the installation process.

# SONY

Network Video

Monitoring



Click on the Finish button to finish the install.

## 6. How to use software

Please see the latest versions of the user guides for the cameras for the operation guides.

[www.sonybiz.net](http://www.sonybiz.net)





Network Video

Monitoring

## 7. Camera Compatibility Matrix

Camera Model	Ver 1.4.1.9
SNC-DS10	■
SNC-DM110	■
SNC-DS60	■
SNC-DM160	■
SNC-CS20	■
SNC-CM120	■
SNC-DF80(P)	■
SNC-CS50(P)	■
SNC-CS10	■
SNC-CS11	■
SNC-RZ50(P)	■
SNC-CS50(P)	■
SNC-RX530(P)	■
SNC-RX550(P)	■
SNC-RX570(P)	■
SNC-P5	■
SNC-RZ25(P)	■
SNC-DF70(P)	■
SNC-DF40(P)	■
SNC-P1	■
SNC-CS3	■
SNC-Z20	■
SNC-RZ30	■
SNT-V704	■